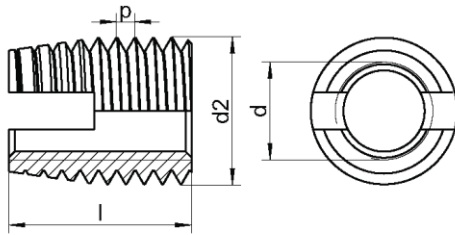


RX 9270

Wkłady gwintowe typ 302 samonacinające



d	d2	l
M3x0,5	5,0	6
M4x0,75	6,5	8
M5x1	8,0	10
M6x1,5	10,0	14
M8x1,5	12,0	15
M10x1,5	14,0	18
M12x1,5	16,0	22
M14x1,5	18,0	24
M16x1,5	20,0	22
M20x1,5	26,0	27

Material	Opakowanie
A1	250
A1	250
A1	250
A1	250
A1	100
A1	100
A1	50
A1	50
A1	50