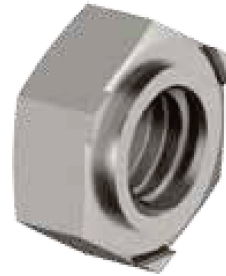
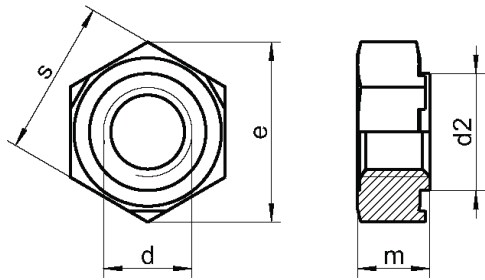


DIN 929

Nakrętki sześciokątne do zgrzewania



d	m	s	e	d2	⬡
M3	3,0	7,5	8,15	4,5	7,5
M4	3,5	9	9,83	6,0	9
M5	4,0	10	10,95	7,0	10
M6	5,0	11	12,02	8,0	11
M8	6,5	14	15,38	10,5	14
M10	8,0	17	18,74	12,5	17
M12	10,0	19	20,91	14,8	19
M16	13,0	24	26,51	18,8	24

Material	Opakowanie
A2 / A4	200
A2 / A4	200
A2 / A4	200
A2 / A4	200
A2 / A4	200
A2 / A4	100
A2 / A4	50
A2 / A4	50