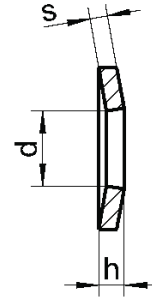
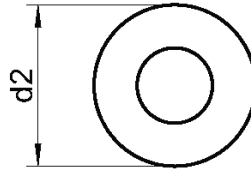


## DIN 6796

### Podkładki sprężyste

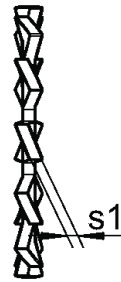
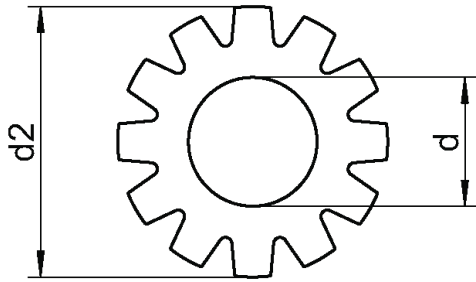


d	do gwintu	d2	h min.	h max.	s
3	M3	7	0,72	0,85	0,6
4	M4	9	1,12	1,30	1,0
5	M5	11	1,35	1,55	1,2
6	M6	14	1,70	2,00	1,5
8	M8	18	2,24	2,60	2,0
10	M10	23	2,80	3,20	2,5
12	M12	29	3,43	3,95	3,0
14	M14	35	4,04	4,65	3,5
16	M16	39	4,58	5,25	4,0
18	M18	42	5,08	5,80	4,5
20	M20	45	5,60	6,40	5,0
22	M22	49	6,15	7,05	5,5
24	M24	56	6,77	7,75	6,0

Materiał	Opakowanie
A2 / A4	200
A2 / A4	200
A2 / A4	200
A2 / A4	200
A2 / A4	200
A2 / A4	200
A2 / A4	100
A2 / A4	100
A2 / A4	100
A2 / A4	100
A2 / A4	100
A2 / A4	50
A2 / A4	50

## DIN 6796 AZ

### Podkładki sprężyste ząbkowane



d	do gwintu	d2	s1
2,2	M2	4,5	0,3
2,7	M2,5	5,5	0,4
3,2	M3	5,5	0,4
3,7	M3,5	6,0	0,4
4,3	M4	7,0	0,5
5,3	M5	8,0	0,5
6,4	M6	11,0	0,7
7,4	M7	12,5	0,8
8,4	M8	15,0	0,8
10,5	M10	18,0	0,9
13,0	M12	20,5	1,0
15,0	M14	24,0	1,0
17,0	M16	26,0	1,2
19,0	M18	30,0	1,4
21,0	M20	33,0	1,4
23,0	M22	36,0	1,5
25,0	M24	38,0	1,5
28,0	M27	44,0	1,6
31,0	M30	48,0	1,6

Materiał	Opakowanie
A2	1000
A2	1000
A2	1000
A2	1000
A2	1000
A2	1000
A2	1000
A2	500
A2	500
A2	500
A2	500
A2	200
A2	200
A2	200
A2	100
A2	100
A2	100
A2	100