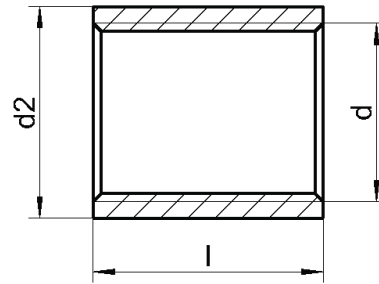


DIN 2986 G

Mufa

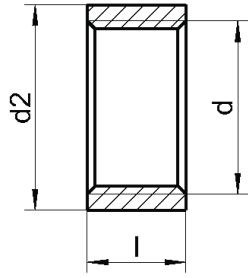


d	d2	l	NW
1/4"	17,5	25	8
3/8"	21,3	26	10
1/2"	26,4	34	15
3/4"	31,8	36	20
1"	39,5	43	25
1 1/4"	48,3	48	32
1 1/2"	54,5	48	40
2"	66,3	56	50
3"	95,0	71	80

Materiał	Opakowanie
A4	10
A4	10
A4	10
A4	5
A4	5
A4	1
A4	1
A4	1
A4	1

DIN 2986 H

Półmufa



d	d2	l	NW
1/4"	17,5	11	8
3/8"	21,3	12	10
1/2"	26,4	14	15
3/4"	31,8	17	20
1"	39,5	19	25
1 1/4"	48,3	22	32
1 1/2"	54,5	22	40
2"	66,3	26	50
2 1/2"	82,0	30	65
4"	122,0	38	100

Material	Opakowanie
A4	10
A4	10
A4	10
A4	5
A4	5
A4	1
A4	1
A4	1
A4	1
A4	1