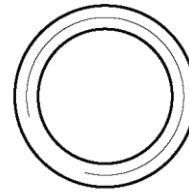
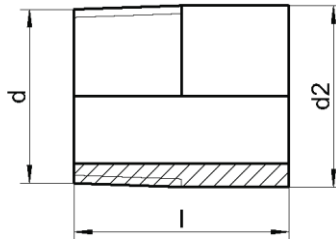


DIN 2982 A

Nypel jednostronnie gwintowany

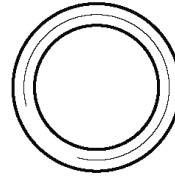
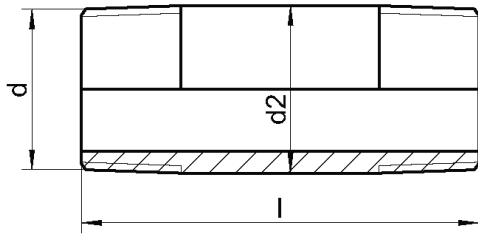


d	d2	l	NW
1/4"	13,5	30	8
3/8"	17,2	30	10
1/2"	21,3	35	15
3/4"	26,9	40	20
1"	33,7	40	25
1 1/4"	42,4	50	32
1 1/2"	48,3	50	40
2"	60,3	50	50
2 1/2"	76,1	60	65

Materiał	Opakowanie
A4	10
A4	10
A4	10
A4	1
A4	1
A4	1
A4	1
A4	1
A4	1

DIN 2982 R

Nypel dwustronnie gwintowany



d	d2	l	NW
1/4"	13,5	30	8
3/8"	17,2	30	10
1/2"	21,3	35	15
3/4"	26,9	40	20
1"	33,7	40	25
1 1/4"	42,4	50	32
1 1/2"	48,3	50	40
2"	60,3	50	50
2 1/2"	76,1	60	65

Materiał	Opakowanie
A4	10
A4	10
A4	10
A4	1
A4	1
A4	1
A4	1
A4	1
A4	1