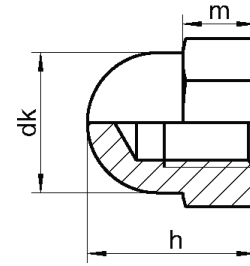
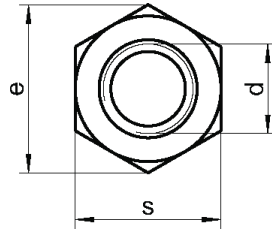


DIN 1587

Nakrętki kołpakowe wysokie



d	m	h	s	e	dk	
M3	2,4	7	5,5	6,01	5,5	5,5
M4	3,2	8	7,0	7,66	6,5	7,0
M5	4,0	10	8,0	8,79	7,5	8,0
M6	5,0	12	10,0	11,05	9,5	10,0
M8	6,5	15	13,0	14,38	12,5	13,0
M10	8,0	18	17,0	18,90	16,0	17,0
M12	10,0	22	19,0	21,10	18,0	19,0
M14	11,0	25	22,0	24,49	21,0	22,0
M16	13,0	28	24,0	26,75	23,0	24,0
M18	15,0	32	27,0	30,14	26,0	27,0
M20	16,0	34	30,0	33,53	28,0	30,0
M22	18,0	39	34,0	37,72	33,0	34,0
M24	19,0	42	36,0	39,98	34,0	36,0
M27	20,0	47	41,0	47,30	40,0	41,0
M30	24,0	52	46,0	52,00	42,0	46,0

Materiał	Opakowanie
A2 / A4	1000
A2 / A4	1000
A2 / A4	1000
A2 / A4	500
A2 / A4	200
A2 / A4	100
A2 / A4	100
A2 / A4	50
A2 / A4	50
A2 / A4	25
A2 / A4	25
A2 / A4	10
A2 / A4	10
A2 / A4	10
A2 / A4	10